

Appliance Quick Start Guide

Haivision Media Platform 2.6

This Quick Start Guide provides the steps required to install and connect to your HMP server.



Getting Started

Haivision Media Platform (HMP) is a scalable media recording, management and distribution platform designed to share video content in real-time.

This Quick Start Guide summarizes the basic steps required to install and connect to your HMP physical server or VMware server and get started. Please refer to the Haivision Media Platform Administration Guide for additional configuration procedures and detailed information. For information on options available to non-administrative users, please refer to the Haivision Media Platform User's Guide. You may download these guides as well as the latest software and Release Notes through our Support Portal at: <https://support.haivision.com>.

Use the following guidelines when unsafe conditions exist or when potentially hazardous voltages are present:

- Always use caution and common sense.
- To reduce the risk of electrical shock, do not operate equipment with the cover removed.
- Repairs must be performed by qualified service personnel only.

Improper handling and/or installation practices of sensitive equipment may VOID the warranty.

⚠ Caution

When handling components, or when setting switch options, always use an antistatic wrist strap connected to a grounded equipment frame or chassis. *If a wrist strap is not available, periodically touch an unpainted metal surface on the equipment.* Never use a conductive tool, such as a screwdriver or a paper clip, to set switches.

Waste Electrical and Electronic Equipment (WEEE) Disposal



In accordance with the European Union (EU) WEEE Directive, Haivision products that fall within the scope of the WEEE, are labeled with the above symbol, and customers are encouraged to responsibly recycle their equipment at the time of disposal. Haivision also offers its customers the option of returning Haivision equipment to facilitate its environmentally sound disposal.

For more information, please visit our website at: <https://www.haivision.com/environment>.

Physical Server Installation

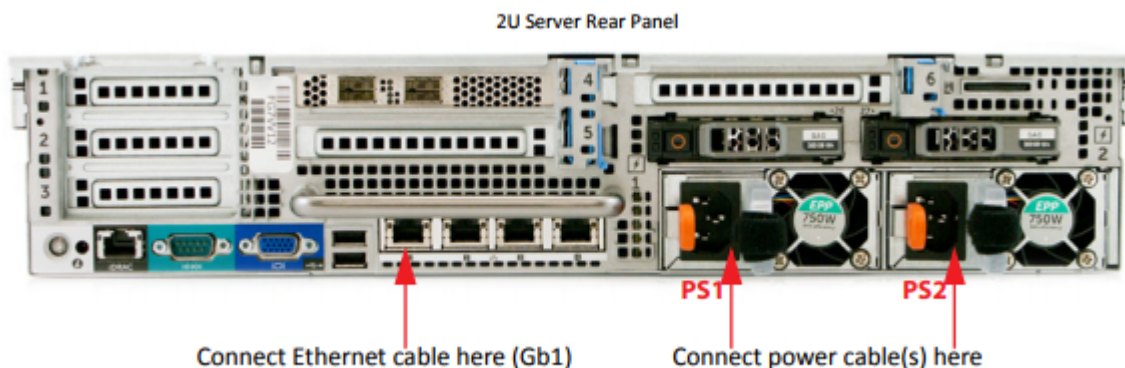
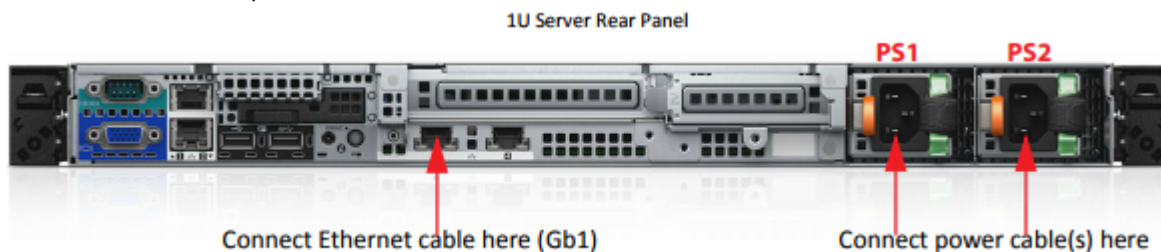
1. Unpack the box(es) and visually inspect the package contents for any evidence of shipping damage. (See *Haivision Media Platform Important Notice* for list of contents.)

2.

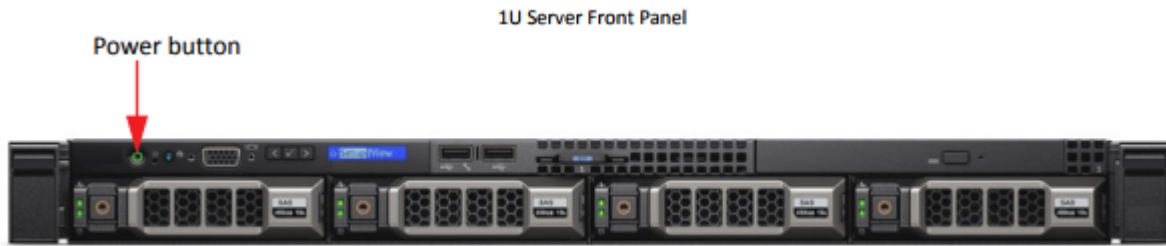
⚠ Caution

When mounting in a server rack, please refer to your rack vendor's documentation as well as the included rack mount instructions in the rail kit provided with your server. Improper rack mounting could cause serious harm to equipment and serious injury to people near the rack. Please be sure to properly and securely mount your hardware!

3. Connect the Ethernet cable to Gb1.
4. Connect one or both power cables.



5. Press the Power button.



VMware Installation

Haivision Media Platform is also available as a Virtual Appliance for VMware ESXi and vSphere environments. Haivision .OVAs are compatible with ESXi 5.5 and above. To run Haivision Media Platform under a VMware platform:

1. Download the Haivision Media Platform Virtual Machine Release Package from Haivision’s Support Portal and extract the files.
2. Import the .OVA file into VMware’s vSphere Hypervisor 5.5 or greater.
3. Configure the virtual host to meet the minimum specifications (as described following).

Minimum Specifications for HMP Virtual Appliance Editions
12 CPU cores - 16GB RAM

4. Power on the virtual machine.
5. See [Licensing Your VMware Appliance](#).

Accessing the Web Interface

- 1.

Note

Your browser may need to be Flash-enabled in order to use this site. System Administrators can set desktop browser playback to either the “Modern” HTML5 (via HLS) or “Legacy” Flash-based player. Newly installed v2.6 systems, as well as systems upgraded to v2.6, will default to the “Legacy” Player. For more information, see “Managing Security” in the *Haivision Media Platform Administrator’s Guide*.

2. Type the Haivision Media Platform URL or IP address in the browser’s address bar and press Enter. Haivision Media Platform ships with the following default settings:

IP Address	Network Mask	Default Gateway	DNS
10.5.1.3	255.255.255.0	10.5.1.1	10.1.1.5

Note

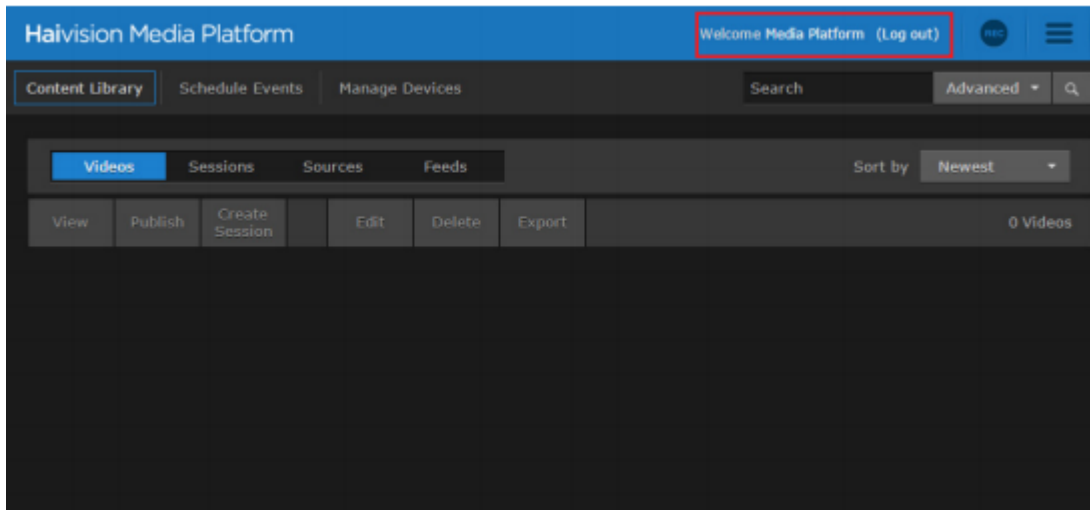
To access the Web interface, your computer must be in the same IP Address range (subnet). You may have to temporarily change your computer's IP Address to be in the same subnet as Haivision Media Platform. Before you can begin, you must configure Haivision Media Platform with a valid IP address and gateway to work in your environment. For details, see [Modifying the IP Address](#).

3. (**VMware installation**) If your VMware environment supports DHCP, use the VMware console or VMware tools to find the current IP Address of the Haivision Virtual Machine.
4. If you see a Security Certificate warning, click **Proceed anyway** (or equivalent) to accept the certificate and continue to the Sign In page.
5. Sign into the Web interface, using the default administrative username/password: `haiadmin` / `manager`.

Note

`haiadmin` is a special "system user" intended primarily for initial setup and system troubleshooting. For day-to-day system control and administration, you are strongly advised to create a regular (administrative) user with a secure password. As a security measure, be sure to change the default password for the `haiadmin` account. See the following section, [Changing the Default Password](#).

When you first sign in, the HMP Web interface opens to the Content Library (as shown in the following example of a new system). If you activate the Portal, the Web interface opens to the Portal.



- The Portal is an optional feature that your organization can use to create a custom landing (home) page for users. Please refer to the *Haivision Media Platform Administrator's Guide* for information on activating the Portal.
- The Content Library is typically used by users with account permissions to set up and manage the content that viewers can see.

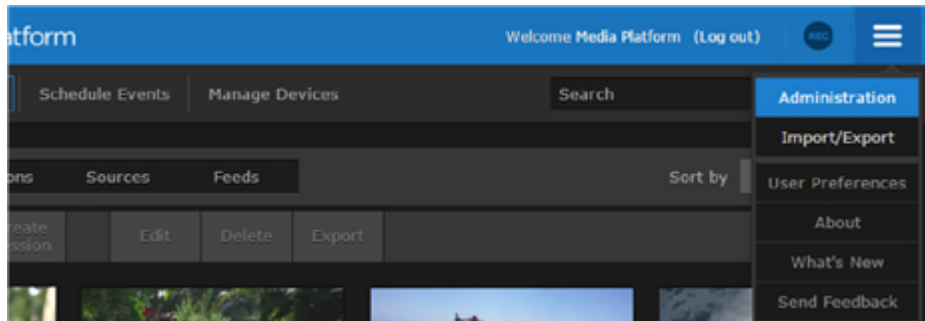
Changing the Default Password

1. Click the user name (e.g., Administrator) on the navigation bar (next to "Welcome").
2. On the Change User Password dialog, type your current password in the Current Password field.
3. Type the new password in the New Password field and again in the Retype Password field.
4. Click **Save User**.

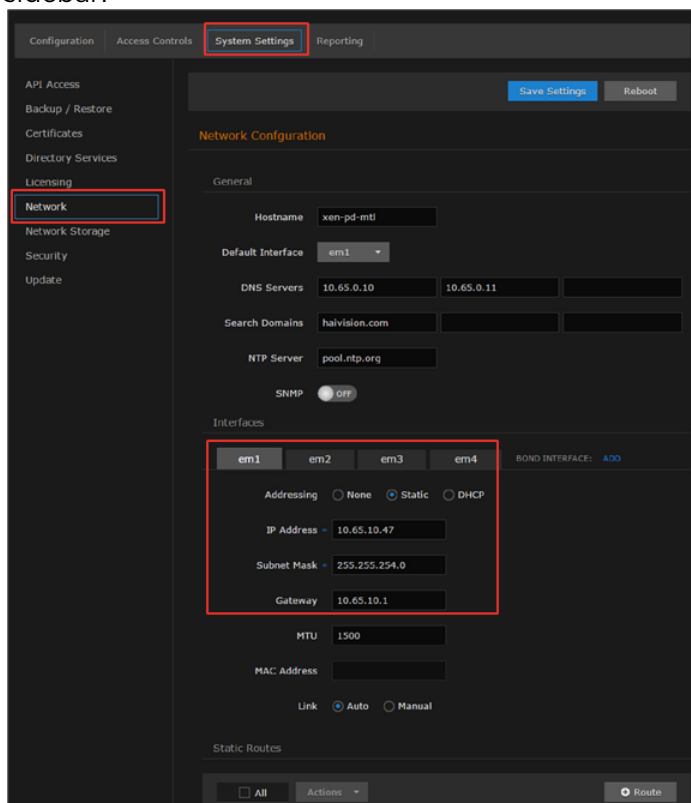
The password change will take effect immediately.

Modifying the IP Address

1. Click the  icon on the toolbar and select **Administration** from the navigation drop-down menu.



2. On the Administration page, click **System Settings** on the toolbar and then click **Network** on the sidebar.

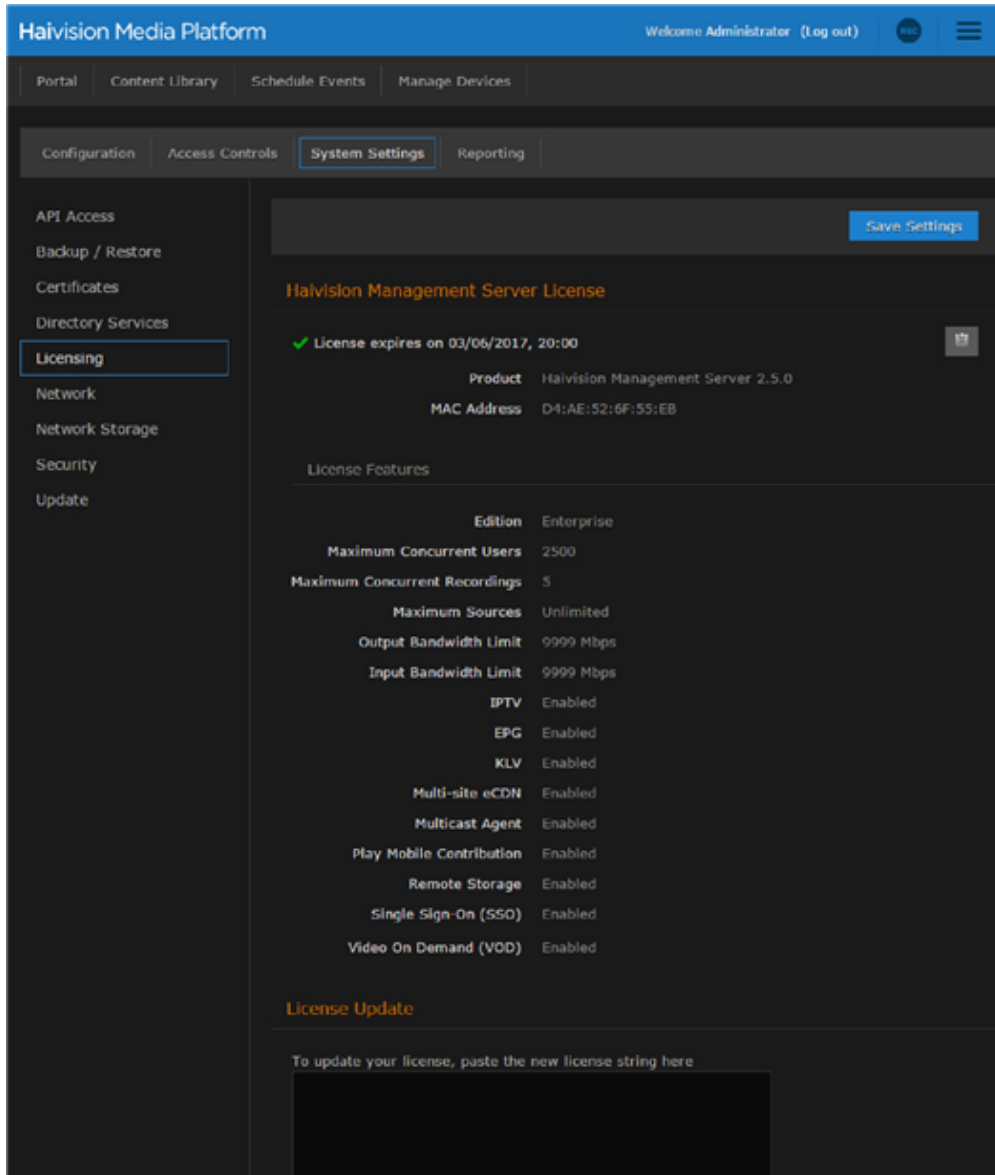



3. On the Network Configuration page, for **em1** (or the first network interface), either:
 - Select DHCP to enable Dynamic Host Configuration Protocol, or
 - Enter a valid IP address, subnet mask, and gateway to work in your environment.
4. Click **Save Settings**, and then click **Reboot**.
5. After the system has rebooted, log in again to continue.

Licensing Your VMware Appliance

To run Haivision Media Platform under a VMware platform, you need to obtain a valid license key for the VM from Haivision Technical Support and enter this on the Licensing page.

1. On the Administration page, click **System Settings** on the toolbar and then click **Licensing** on the sidebar.

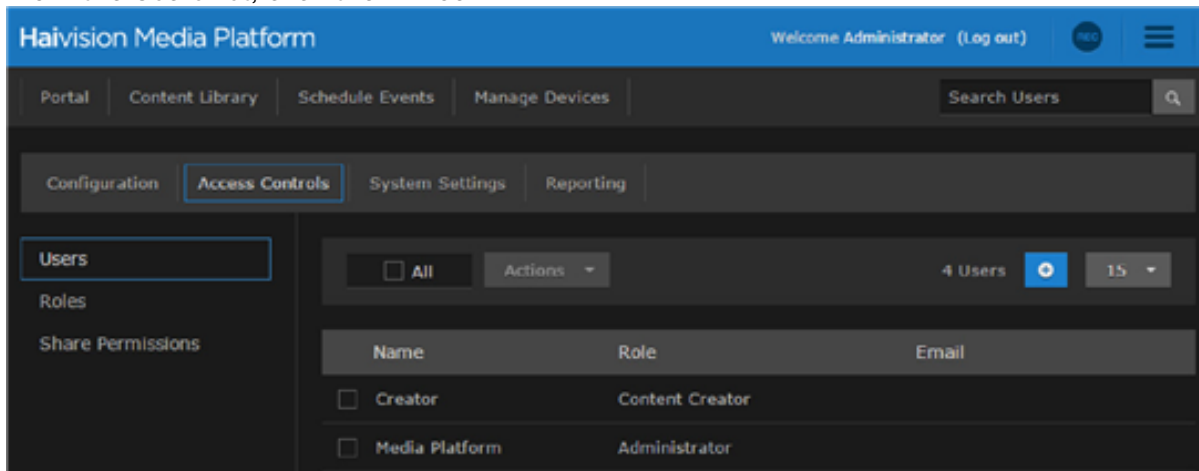


2. Click the  icon to copy the current product details to the clipboard.
3. Contact Haivision Technical Support with this information to request the license key.
4. Once you have the license key, paste the license string in the License text box.
5. Click **Save Settings** to load the license.

Creating a New Admin User


1. On the Administration page, click **Access Control** on the toolbar and then click **Users** on the sidebar.

- From the Users list, click the  icon.




- On the Add User dialog, enter the display Name, Username/Password for logging in, and Email address to associate with the user account.

The 'Add User' dialog form has the following fields: 'Name' (text input), 'Username' (text input), 'Password' (password input), 'Retype Password' (password input), 'Email' (text input), and 'Role' (dropdown menu with 'None' selected). At the bottom, there are 'Cancel' and 'Add User' buttons.

-  **Tip**

Haivision Media Platform uses roles with pre-defined permissions to provide users or groups with controlled access to sessions and recordings. Users must be assigned a role in order to log in. Users may also be assigned “share” permissions for content rights (recordings and sessions) by administrators or other users.
- Click **Add User**.
The new user will be added to the Users list.
- Click **Log Out** on the navigation bar and then log in with your new credentials to have full administrative permissions.

 **Note**

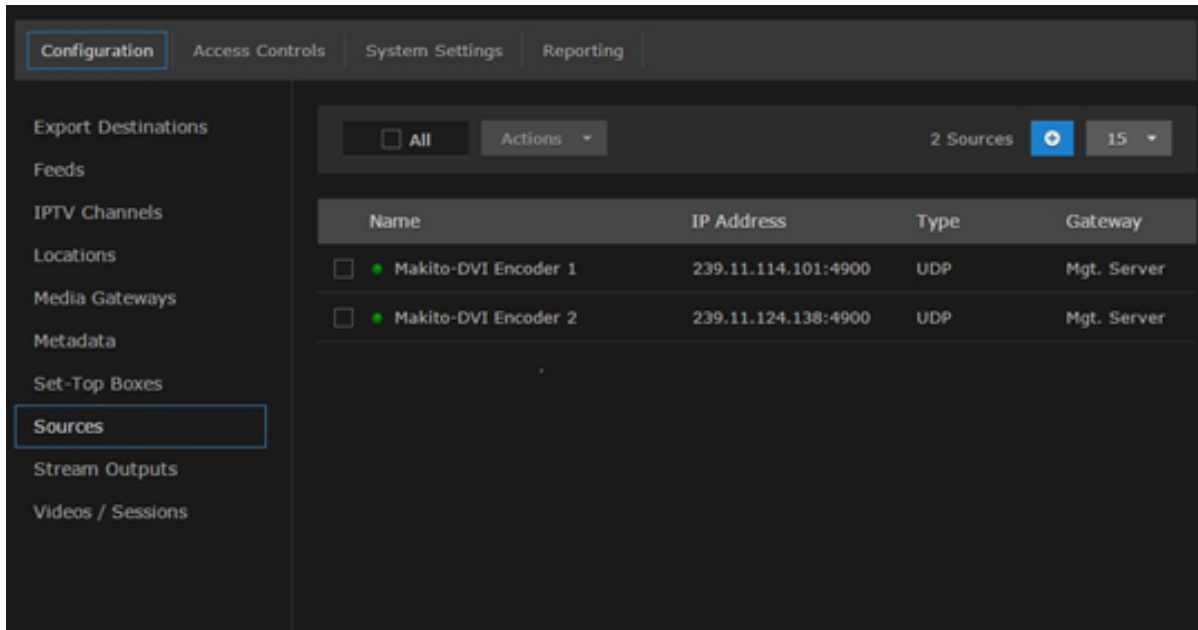
For more information on managing users/groups and roles or connecting Haivision Media Platform to a directory server, please see the *Administrator's Guide*.

Adding a Source

A source is an incoming unicast or multicast video stream or IPTV channel that can be recorded or viewed live. Haivision Media Platform provides access to video streams originating from Haivision Makito and Makito X encoders or other systems that produce compatible MPEG-TS video streams. When setting up HMP, you need to specify the streaming A/V sources to be available for content creators and others to view and capture.

1. On the Administration page, click **Configuration** on the toolbar and then click **Sources** on the sidebar.
2. From the Sources list, click the **+** icon.
3. On the Add Source dialog, enter the Name, Description, IP Address, and Port for the source. Leave the default Type (UDP) and Receiver (HMP).

4. For a unicast stream, uncheck the Multicast Stream checkbox.
5. To configure the source as an IPTV channel (available for viewing from a Haivision Play Set-Top Box), check the IPTV checkbox.
6. To display EPG data on set-top boxes, toggle the EPG button to **On** and select the Schedule. (EPG must be licensed on your system.)
7. Click **Add Source**.
The new source will be added to the Sources list (example shown following).



Once a source is available, the system is ready for streaming, scheduling and recording live events. Please refer to the *Administrator's Guide* and/or *User's Guide* for detailed information including the Portal, Content Library, Import/Export, and Administrative tools.

Note

Multicast playback is a licensed feature and must be purchased separately. Please contact Haivision for more information. Multicast playback requires at least one Media Gateway. Also the Haivision Helper application must be installed on each user's computer. The Helper application and *Installation Guide* are available from the Haivision Support Portal.

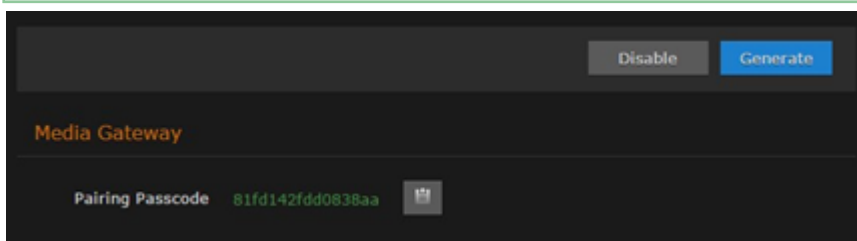
Pairing Haivision Media Platform with a Media Gateway

You can pair the HMP with one or more Haivision Media Gateways. Setting up the pairing requires steps from both the HMP and Media Gateway Web interfaces.

1. On the (HMP) Administration page, click **Configuration** on the toolbar and then click Media Gateways on the sidebar.
2. On the Media Gateways page, click **Generate** to generate the Pairing passcode.

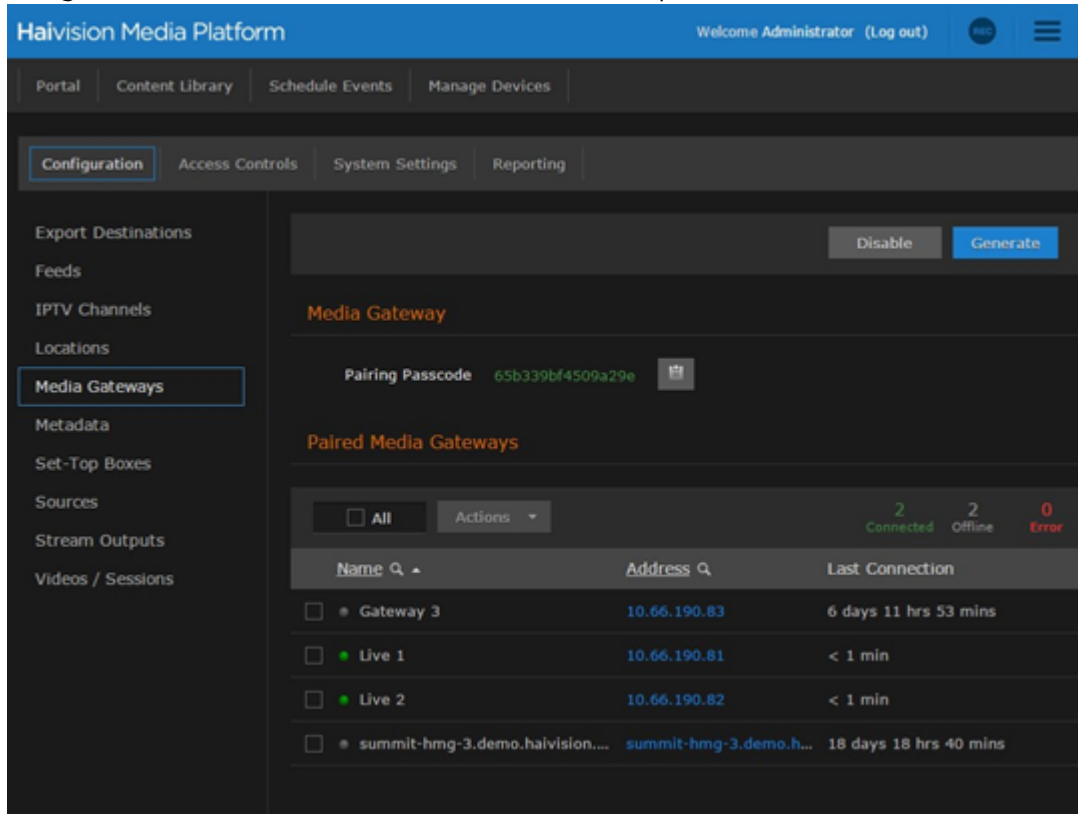
Tip

You can use the same Pairing passcode to set up multiple gateway pairings.



3. Copy the passcode to the clipboard. (Do not disable yet.)
4. Make note of the HMP address and ports. If there is a cross-domain address, make a note of it as well.

5. On the (Media Gateway) Administration page, click **Media Platform** on the sidebar. In the Gateway section of the Settings pane, enter the Media Gateway information as needed.
6. In the Media Platform section of the Settings pane, enter the HMP information that you noted earlier and paste the Pairing passcode into the Passcode field. Click **Pair**. For details, refer to the Media Gateway User’s Guide.
7. On the (HMP) Media Gateways page, this gateway is now listed in the Paired Media Gateways list, along with the connection status and the time elapsed since the last connection was seen.

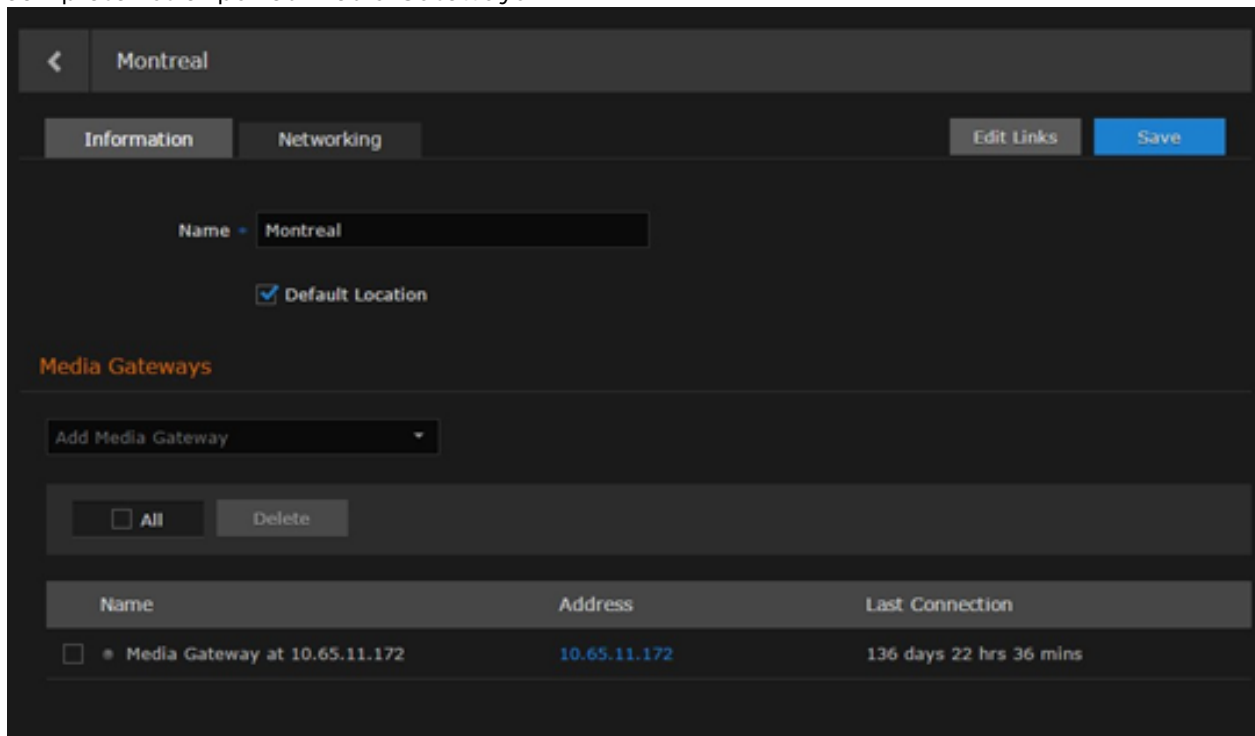


Note

You can click the gateway IP or hostname action link (blue) to open the Media Gateway Web interface in a new tab.

8. On the (HMP) Administration page, click **Locations** on the sidebar and either select a defined location or click the **+** icon. On the Location Information pane, this gateway is now available for selection from the auto-

complete list of paired Media Gateways.



9. On the (HMP) Media Gateways page, click **Disable** to block any new connections.

Obtaining Documentation

This document was generated from the Haivision InfoCenter. To ensure you are reading the most up-to-date version of this content, access the documentation online at <https://doc.haivision.com>. You may generate a PDF at any time of the current content. See the footer of the page for the date it was generated.

Getting Help

General Support	<p>North America (Toll-Free) 1 (877) 224-5445</p> <p>International 1 (514) 334-5445</p> <p><i>and choose from the following:</i> Sales - 1, Cloud Services - 3, Support - 4</p>
Managed Services	U.S. and International 1 (512) 220-3463
Fax	1 (514) 334-0088
Support Portal	https://support.haivision.com
Product Information	info@haivision.com