

# Server Quick Start Guide

## Haivision Media Platform 3.2

Haivision Media Platform (HMP) is a scalable media recording, management, and distribution platform designed to share video content in real-time. This Quick Start Guide provides the steps required to install and connect to your HMP server.

- For detailed configuration and operation information, refer to the [Administrator's Guide](#).
- For information on options available to non-administrative users, please refer to the [User's Guide](#).
- To install an HMP virtual machine, refer to the [VMware Quick Start Guide](#).

The above documents are available on the InfoCenter (<https://doc.haivision.com>).

For the default credentials, refer to the *Important Notice* document (shipped with the server). You may download the *Important Notice*, as well as the latest software and Release Notes through the [Download Center](#) on the Haivision Support Portal (<https://support.haivision.com>).

## Safety Guidelines

Use the following guidelines when unsafe conditions exist or when potentially hazardous voltages are present:

- Always use caution and common sense.
- To reduce the risk of electrical shock, do not operate equipment with the cover removed.
- Repairs must be performed by qualified service personnel only.

Improper handling and/or installation practices of sensitive equipment may VOID the warranty.

### Caution

When handling components, or when setting switch options, always use an antistatic wrist strap connected to a grounded equipment frame or chassis. *If a wrist strap is not available, periodically touch an unpainted metal surface on the equipment.* Never use a conductive tool, such as a screwdriver or a paper clip, to set switches.

## Waste Electrical and Electronic Equipment (WEEE) Disposal



In accordance with the European Union (EU) WEEE Directive, Haivision products that fall within the scope of the WEEE, are labeled with the above symbol, and customers are encouraged to responsibly recycle their equipment at the time of disposal. Haivision also offers its customers the option of returning Haivision equipment to facilitate its environmentally sound disposal.

For more information, please visit our website at: <https://www.haivision.com/environment>.

# Connecting the Server


To connect the server:

1. Open the box, verify the contents, and visually inspect the items for any shipping damage. If necessary, contact Haivision for return instructions.
2. Unpack the box and position the hardware on a stable work surface. Optionally, mount the device in a server rack.

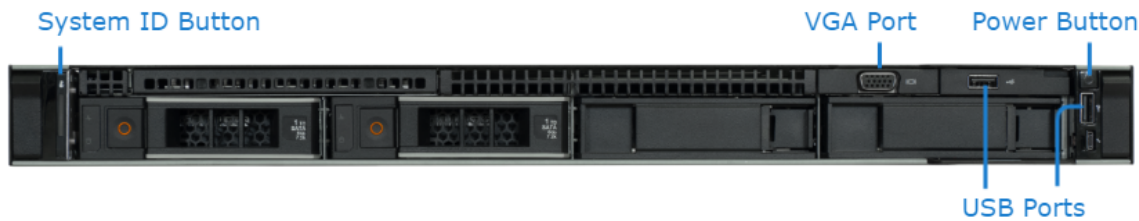
**⚠ Caution**

When mounting in a server rack, refer to your rack vendor’s documentation as well as the included rack mount instructions in the rail kit provided with your system. Improper rack mounting could cause serious harm to equipment and/or people near the rack. Please be sure to properly and securely mount your hardware.



Ensure that the final location has proper airflow. Do not block or impede airflow to the vents.

3. On the device:
  - Connect to your network using an Ethernet cable. For most configurations, use the port labeled Gb1 or NICO.
  - For initial setup purposes, attach a mouse, keyboard, and monitor to the available USB and VGA ports.
  - If necessary, connect any cables to the available I/O ports as shown in the following diagram(s).
  - Attach the power cord to the power receptacle.
4. On the front of the device, press the  button to power it on. The power LED lights.

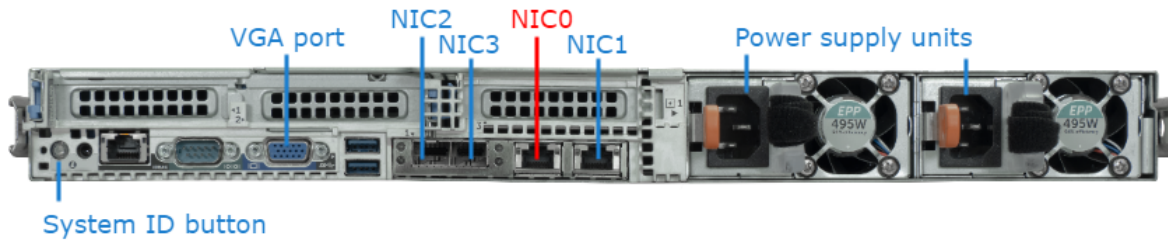
[Front](#)   [Back](#)



The following LED indicators are located on the front of the server.

LED Indicator	Icon	Description
Power-On		Power-on indicator lights when the system power is on. The Power button controls the power supply output to the system.
System Identification Button		Can be used to locate a particular system within a rack. When pressed, the front and rear system identification buttons flash until one of the buttons is pressed again.

Front Back



**Note**

Please note that the physical order of the NICs on the back panel from left-to-right does not match the numerical logical order in the system. NICO is the default IP interface for HMP. The default interface is assigned a static IP address during manufacturing, which should be used in a browser to access the system and log in to the Console UI to configure the unit.

The following LED indicator is located on the back of the server.

LED Indicator	Icon	Description
System Identification Button		Can be used to locate a particular system within a rack. When pressed, the front and rear system identification buttons flash until one of the buttons is pressed again.

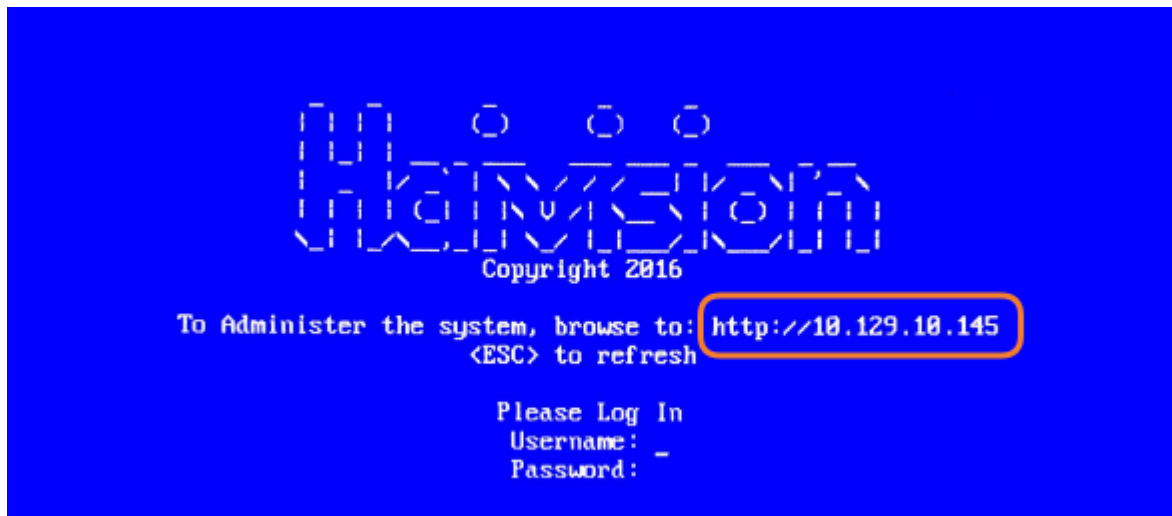
## Changing the Network Settings

**Note**

After first boot, the device is configured for a static IP address as defined in the *Important Notice*. Prior to accessing the main Web interface, you must configure the device with a valid IP address and gateway to work in your environment. The following section takes you through the steps to update your network settings using the Console UI.

To change the network settings of the device:

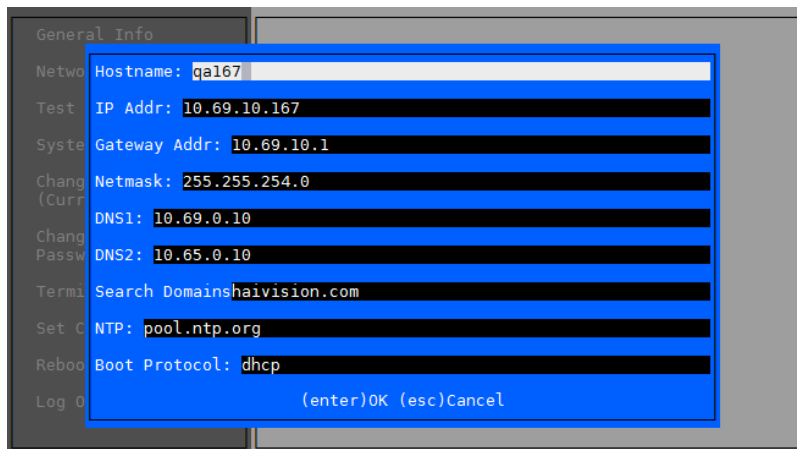
1. Once the Console UI welcome screen appears on the attached monitor, locate the IP Address assigned to the device as noted on the welcome screen.



2. Log in to the Console UI using the credentials provided in the *Important Notice*.
3. In the navigation sidebar, use the ↑↓ (up and down arrow) keys to highlight **Network Settings**, and then press the **Enter** key.
4. Using the ↓ (down arrow) to step through all the Network Settings, change the Hostname, IP Address, Gateway Address, Boot Protocol (DHCP or static), and any other settings as necessary.

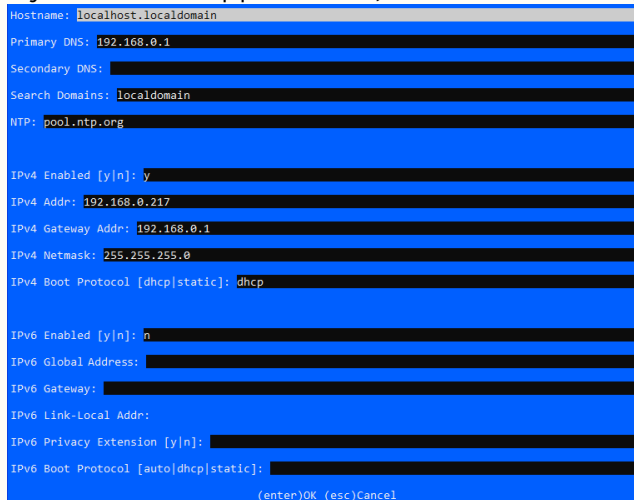
**⚠ Note**

- In the Boot Protocol textbox you must type either 'dhcp' or 'static'.
- Depending on your SSH client settings, the console window might not display all the available settings. For instance, "Boot Protocol" may not be visible if your screen height is not large enough.



**Note**

If your device supports IPv6, the network settings page contains both IPv4 and IPv6 settings:



5. Press the **Enter** key to save your changes and return to the main screen.

**Note**

After pressing Enter, it takes a few seconds for the settings to be saved. The system may seem unresponsive during this time.

6. Select **Log Out** and then press the **Enter** key to exit the Console UI.

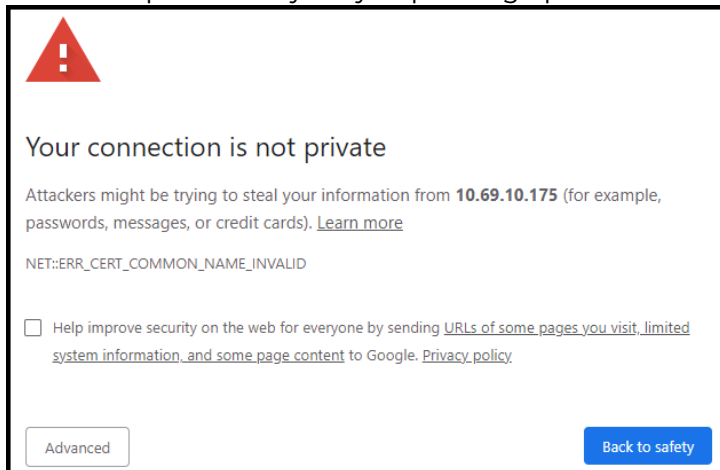
For more details, refer to [Using the Console UI with Haivision Hardware](#).

## Accessing the Web Interface

To access the device's Web interface:

1. On another computer connected to the same network, open a Web browser.
2. Enter the device's assigned IP address. For example, if the IP Address is 10.5.1.4, enter a URL of https://10.5.1.4.
3. When a browser accesses the website, it requests a security certificate to confirm that the site is trusted.

The device ships with a self-signed SSL certificate key set which works with any configured server hostname. However, Web browsers do not consider self-signed certificates to be trusted, because they are not signed by a Certificate Authority. Consequently, when accessing the website with a self-signed certificate, users see a security warning and are prompted for authorization as shown below. Responses may vary depending upon the browser used.

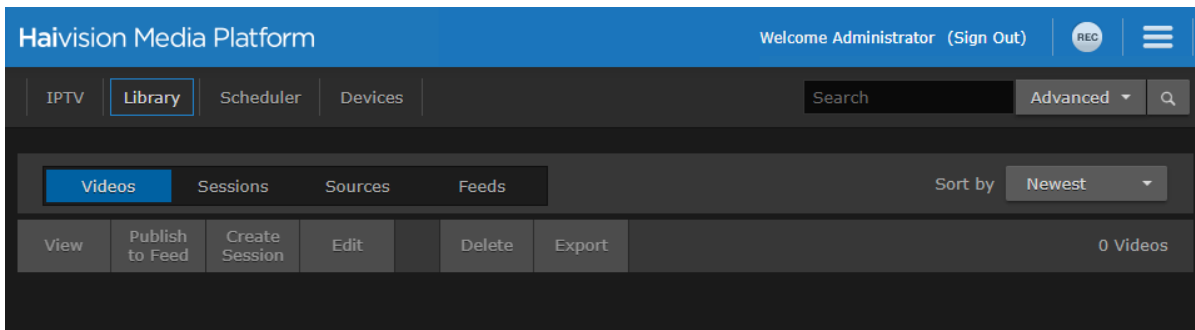


**Important**

Before proceeding or adding an exception for the site, check with your administrator on the correct response.

4. Sign in using one of the credentials provided on the *Important Notice* included with your device.

When you first sign in, the HMP Web interface opens to the Library (as shown in the following example of a new system). The Library is typically used by users with account permissions to set up and manage the content that viewers can see.



For configuration and operation information, refer to the [Administrator's Guide](#). For information on options available to non-administrative users, refer to the [User's Guide](#).

## Obtaining Documentation

This document was generated from the Haivision InfoCenter. To ensure you are reading the most up-to-date version of this content, access the documentation online at <https://doc.haivision.com>. You may generate a PDF at any time of the current content. See the footer of the page for the date it was generated.

## Getting Help

<b>General Support</b>	<p>North America (Toll-Free)  <b>1 (877) 224-5445</b></p> <p>International  <b>1 (514) 334-5445</b></p> <p><i>and choose from the following:</i>  Sales - 1, Cloud Services - 3, Support - 4</p>
<b>Managed Services</b>	<p>U.S. and International  1 (512) 220-3463</p>
<b>Fax</b>	<p>1 (514) 334-0088</p>
<b>Support Portal</b>	<p><a href="https://support.haivision.com">https://support.haivision.com</a></p>
<b>Product Information</b>	<p><a href="mailto:info@haivision.com">info@haivision.com</a></p>