

# Appliance Quick Start Guide

## Haivision Media Gateway, Version 1.6

### Getting Started

This quick start guide summarizes the basic steps required to install and connect to your Media Gateway appliance (physical server or VM).

For more detailed information, please refer to the *Important Notice* document (shipped with the server) and the [Media Gateway Administrator's Guide](#).

### Safety Guidelines

Use the following guidelines when unsafe conditions exist or when potentially hazardous voltages are present:

- Always use caution and common sense.
- To reduce the risk of electrical shock, do not operate equipment with the cover removed.
- Repairs must be performed by qualified service personnel only.

Improper handling and/or installation practices of sensitive equipment may VOID the warranty.

#### **Caution**

When handling components, or when setting switch options, always use an antistatic wrist strap connected to a grounded equipment frame or chassis. *If a wrist strap is not available, periodically touch an unpainted metal surface on the equipment.* Never use a conductive tool, such as a screwdriver or a paper clip, to set switches.

## Physical Installation

1. Unpack the box(es). See the *Important Notice* for a list of contents.
2. Visually inspect the package contents for any evidence of shipping damage.
- 3.

**⚠ Caution**

When mounting in a server rack, please refer to your rack vendor’s documentation as well as the included rack mount instructions in the rail kit provided with your appliance. Improper rack mounting could cause serious harm to equipment and serious injury to people near the rack. Please be sure to properly and securely mount your hardware.

4. Connect the following on the back of the server:
  - Ethernet cables from your network switch to **Gb1** and **Gb2**.
  - Connect the power cable to the receptacle on the server, and then plug it into an A/C power source.

**S-MG-200 appliance (rear):**



**S-MG-500 appliance (rear):**



5. On the front of the server, press the **Power** button.

**S-MG-200 appliance (front):**



**S-MG-500 appliance (front):**



The Media Gateway server boots, and the **System Status** indicator on the front of the server turns blue.

## Changing Network Settings

**Note**

When first booted, the Media Gateway appliance attempts to obtain an IP Address from a DHCP server on your network. We recommend that you change this address before continuing with the setup. The following section takes you through these steps using the Console UI.

1. Plug a keyboard into one of the USB ports of the Media Gateway appliance.
2. Plug a monitor into the video port of the appliance and turn on the monitor. After connecting, the appliance displays the Login screen for the Console UI showing the current IP Address.

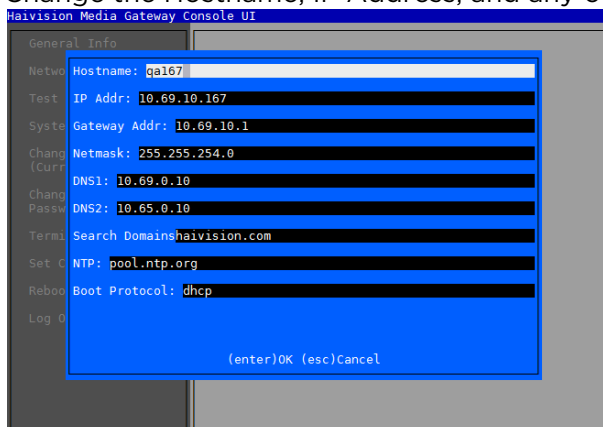


**Tip**

Make note of the assigned IP address for accessing the web interface.

3. Log in using the default Console UI user name and password. Refer to the *Important Notice* document that accompanied your device for more information.
4. In the navigation sidebar, use the ↑↓ (up and down arrow) keys to highlight **Network Settings**, and then press the **Enter** key.

5. Change the Hostname, IP Address, and any other settings as necessary.



6. Press the **Enter** key to save your changes and return to the main screen.
7. Select Log Out and then press the **Enter** key to exit the Console UI.

For more details, refer to "Using the Console UI" in the Media Gateway Administrator's Guide.

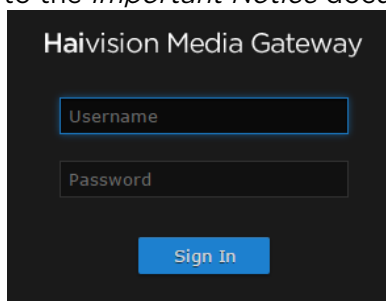
## Accessing the Web Interface

1. Open a Web browser on a PC connected to the same network as the Media Gateway.
2. Browse to the IP Address of the Media Gateway server, which can found on the Console UI login screen as shown in [Changing Network Settings](#).

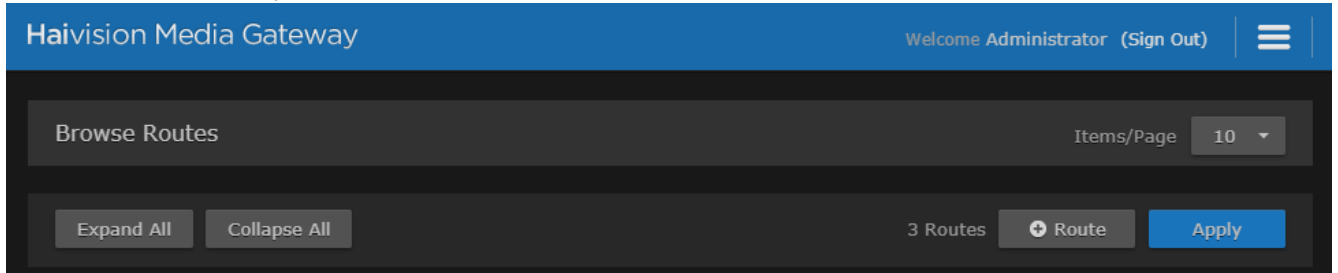
### ! Important

Before proceeding or adding an exception for the site, check with your administrator on the correct response.

3. (**VMware installation**) If your VMware environment supports DHCP, use the VMware console or VMware tools to find the current IP Address of the Haivision Virtual Machine. If your VMware environment does *not* support DHCP, Media Gateway ships with the default settings listed in the *Important Notice*.
4. Sign in to the Media Gateway Web Interface, using the `haiadmin` user name and password. Refer to the *Important Notice* document that accompanied your device for the default credentials.



The Web interface opens to the Browse Routes screen.



For more details, refer to "Accessing Media Gateway" in the Media Gateway Administrator's Guide.

## Waste Electrical and Electronic Equipment (WEEE) Disposal



In accordance with the European Union (EU) WEEE Directive, Haivision products that fall within the scope of the WEEE, are labeled with the above symbol, and customers are encouraged to responsibly recycle their equipment at the time of disposal. Haivision also offers its customers the option of returning Haivision equipment to facilitate its environmentally sound disposal.

For more information, please visit our website at: <https://www.haivision.com/environment>.

### Obtaining Documentation

This document was generated from the Haivision InfoCenter. To ensure you are reading the most up-to-date version of this content, access the documentation online at <https://doc.haivision.com>. You may generate a PDF at any time of the current content. See the footer of the page for the date it was generated.

### Getting Help

<b>General Support</b>	<p>North America (Toll-Free)  <b>1 (877) 224-5445</b></p> <p>International  <b>1 (514) 334-5445</b></p> <p><i>and choose from the following:</i>                  Sales - 1, Cloud Services - 3, Support - 4</p>
<b>Managed Services</b>	U.S. and International 1 (512) 220-3463
<b>Fax</b>	1 (514) 334-0088
<b>Support Portal</b>	<a href="https://support.haivision.com">https://support.haivision.com</a>
<b>Product Information</b>	<a href="mailto:info@haivision.com">info@haivision.com</a>