

VMware Quick Start Guide

Haivision Element Management System VM, Version 1.1

This quick start guide provides the steps to deploy Haivision Element Management System (EMS) within a virtual environment from an Open Virtual Appliance (OVA) file. EMS is available as a virtual machine for VMware ESXi and vSphere environments. Haivision .OVAs are compatible with ESXi 5.5 and above.



For detailed configuration and operation information, refer to the [User's Guide](#).

About VMware vSphere and ESXi

VMware vSphere is a cloud computing virtualization platform for managing ESXi, a bare-metal hypervisor that runs directly on server hardware without requiring an additional underlying operating system. For more information, please visit: <https://www.vmware.com/>



About Haivision Element Management System

Haivision Element Management System (EMS) is a platform for remotely discovering and managing deployments of Haivision devices.

Installing the Virtual Appliance


To run EMS under a VMware platform:

1. Download the EMS Virtual Machine Release Package from the [Support Portal](#) and extract the files.
2. Import the .OVA file into VMware's vSphere Hypervisor 5.5 or greater.
3. Configure the virtual host to meet the minimum specifications (as described following).

Minimum Specifications for Haivision EMS Virtual Appliance Editions	
4 CPU cores - 4GB RAM 80GB HDD (thin provision recommended)	
	Note Haivision VM images use two disks: Disk 1 is sparse-provisioned and set up to grow up to 80GB; Disk 2 is sparse-provisioned and should be replaced by your organization's preferred asset storage or VM storage disk.
Please contact Haivision Technical Support before attempting to resize or replace the virtual disk on the EMS v1.1 Virtual Appliance Edition, as this requires access to the EMS command line interface (to configure the virtual disk devices, LVM, file system, and OS).	
	Important Be sure to reserve sufficient virtual resources (CPU, RAM, NIC, and HD) to avoid adverse effects to the performance of your system.

4. Power on the virtual machine.

Changing Network Settings

	Note After first boot, the device is configured for a static IP address as defined in the <i>Important Notice</i> . Prior to accessing the main Web interface, you must configure the device with a valid IP address and gateway to work in your environment. The following section takes you through the steps to update your network settings using the Console UI.
---	---

To change the network settings of the device:

1. Once the Console UI welcome screen appears on the attached monitor, locate the IP Address assigned to the device as noted on the welcome screen.

Note

If your device supports IPv6, the network settings page contains both IPv4 and IPv6 settings:

```
Hostname: localhost.localdomain
Primary DNS: 192.168.0.1
Secondary DNS:
Search Domains: localdomain
NTP: pool.ntp.org

IPv4 Enabled [y/n]: y
IPv4 Addr: 192.168.0.217
IPv4 Gateway Addr: 192.168.0.1
IPv4 Netmask: 255.255.255.0
IPv4 Boot Protocol [dhcp|static]: dhcp

IPv6 Enabled [y/n]: n
IPv6 Global Address:
IPv6 Gateway:
IPv6 Link-Local Addr:
IPv6 Privacy Extension [y/n]:
IPv6 Boot Protocol [auto|dhcp|static]:
(enter)OK (esc)Cancel
```

5. Press the **Enter** key to save your changes and return to the main screen.

Note

After pressing Enter, it takes a few seconds for the settings to be saved. The system may seem unresponsive during this time.

6. Select **Log Out** and then press the **Enter** key to exit the Console UI.

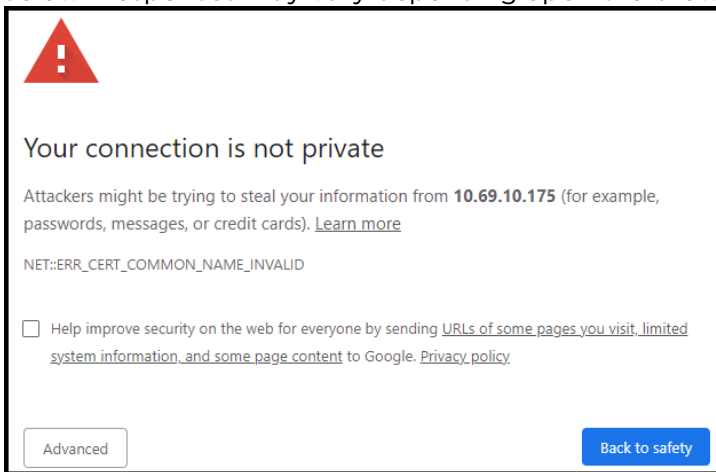
For more details, refer to [Using the Console UI with Haivision Hardware](#).

Accessing the Web Interface

To access the device's Web interface:

1. On another computer connected to the same network, open a Web browser.
2. Enter the device's assigned IP address. For example, if the IP Address is 10.5.1.4, enter a URL of https://10.5.1.4.
3. When a browser accesses the website, it requests a security certificate to confirm that the site is trusted.

The device ships with a self-signed SSL certificate key set which works with any configured server hostname. However, Web browsers do not consider self-signed certificates to be trusted, because they are not signed by a Certificate Authority. Consequently, when accessing the website with a self-signed certificate, users see a security warning and are prompted for authorization as shown below. Responses may vary depending upon the browser used.



Important

Before proceeding or adding an exception for the site, check with your administrator on the correct response.



4. Sign in using one of the credentials provided on the *Important Notice* included with your device.

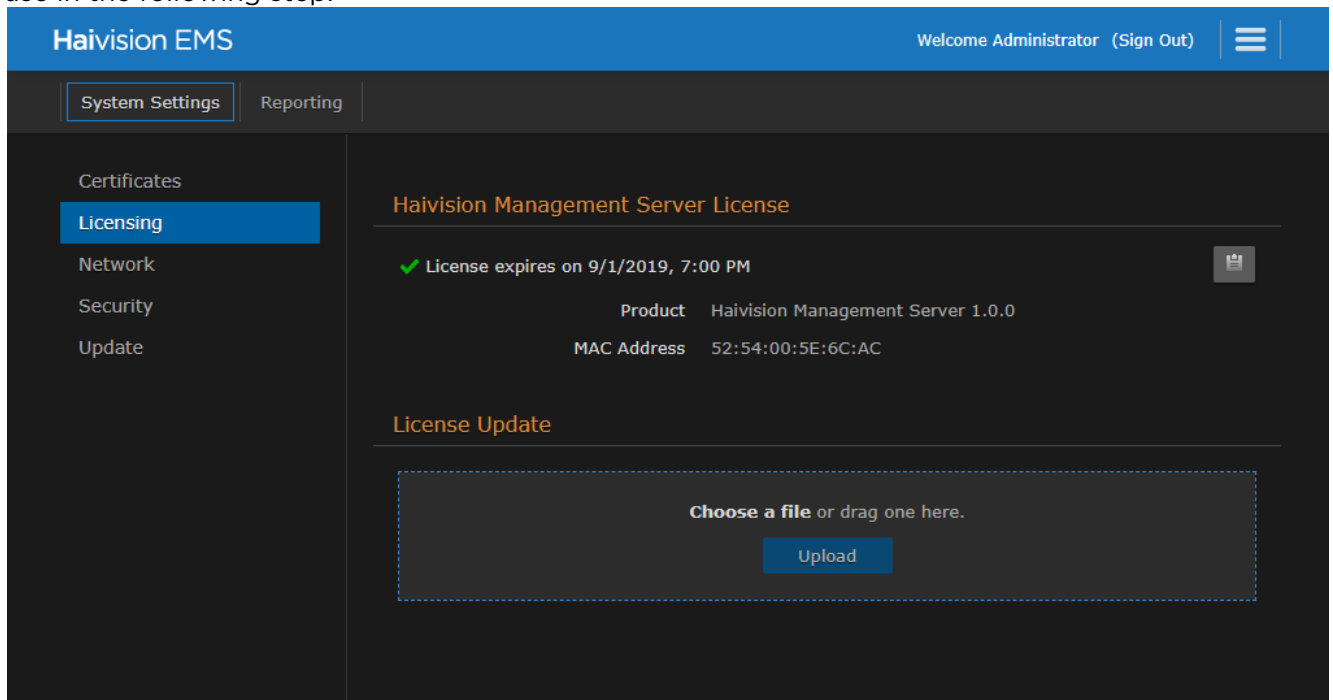
When you first sign in, the EMS Web interface opens to the main screen (as shown in the following example). From here, you can pair, organize and manage devices.

The screenshot displays the Haivision EMS web interface. At the top, a blue header contains the logo 'Haivision EMS' on the left and 'Welcome Administrator (Sign Out)' with a menu icon on the right. Below the header, the dashboard is divided into several sections. On the left, there are two tabs: 'Devices' (selected) and 'Upgrades'. Under 'Devices', there are three status cards: 'Active' with a green checkmark and a count of '0', 'Idle' with a blue power icon and a count of '0', and 'Offline' with a grey power icon and a count of '0'. Below these is a 'Labels' section with a 'Manage' button. The main area on the right features a search bar labeled 'Search EMS' with a magnifying glass icon and a 'Pairing' button with a '2' notification. Below the search bar, there is a summary row showing '1 Device', 'Select All', 'Unselect All', 'Sort by Device Name', and 'Actions'. The rest of the main area is currently empty.

Licensing Your VMware Appliance

To run EMS under a VMware platform, you need to obtain a valid license key for the VM from Haivision Technical Support and enter this on the Licensing page.

1. After signing into the Web interface, if you see a License Required dialog, click **Add License**.
-or-
Click the  icon on the toolbar, select **Administration** from the navigation drop-down menu, click **System Settings** in the admin toolbar, and click **Licensing** in the sidebar.
2. On the Licensing page, click the  icon to copy the current product details to the clipboard for use in the following step.



To request a license for your product:

- a. Log in to the [Haivision Support Portal](https://support.haivision.com) (https://support.haivision.com).
 - b. After logging in, click **License Requests**.
 - c. Click the **New** button.
 - d. Select the appropriate device type and click the **Next** button.
 - e. Fill in the form with the appropriate information, and click **Save**.
Your license request is submitted and you will be contacted by a Haivision representative shortly with a license key for your product.
3. After you receive a license key, paste the license string in the License Update text box.
 4. Click **Save Settings** to load the license.

For configuration and operation information, please refer to the [User's Guide](#).

Obtaining Documentation

This document was generated from the Haivision InfoCenter. To ensure you are reading the most up-to-date version of this content, access the documentation online at <https://doc.haivision.com>. You may

generate a PDF at any time of the current content. See the footer of the page for the date it was generated.

Getting Help

General Support	<p>North America (Toll-Free) 1 (877) 224-5445</p> <p>International 1 (514) 334-5445</p> <p><i>and choose from the following:</i> Sales - 1, Cloud Services - 3, Support - 4</p>
Managed Services	U.S. and International 1 (512) 220-3463
Fax	1 (514) 334-0088
Support Portal	https://support.haivision.com
Product Information	info@haivision.com