

Makito™ Decoder Quick Start Guide

This Quick Start Guide summarizes the basic steps required to install the Makito Compact HD H.264 Video Decoder (single chassis, as shown below) and set up video decoding from a Makito Encoder or a Hai1000 Mako Encoder. Please refer to the User's Guide or the online help (available from the Web Interface) for detailed information.



To Install the Makito Decoder

1. Unpack the box and visually inspect the package contents for any evidence of shipping damage. [See Important Notice for list of contents.]
2. Install the Makito as a desktop unit.
3. Connect the power cable.

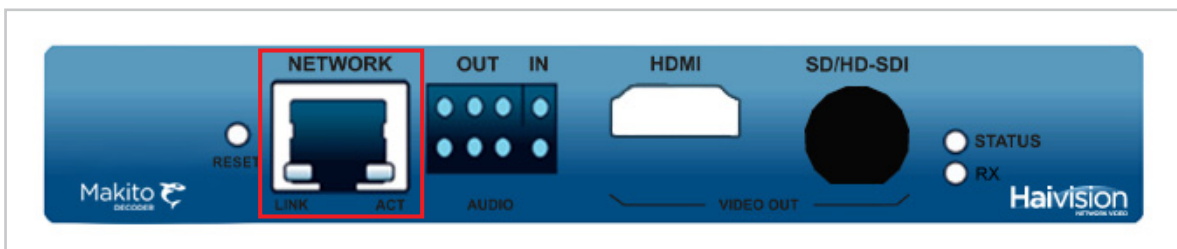


CAUTION Connect the power supply to the chassis *first* and then to the AC source. Always use the AC power cord and power supply provided with the unit.

Make sure the connector is properly inserted and locked to avoid intermittent power problems.

To Connect the Makito Decoder to the Network and A/V Sources

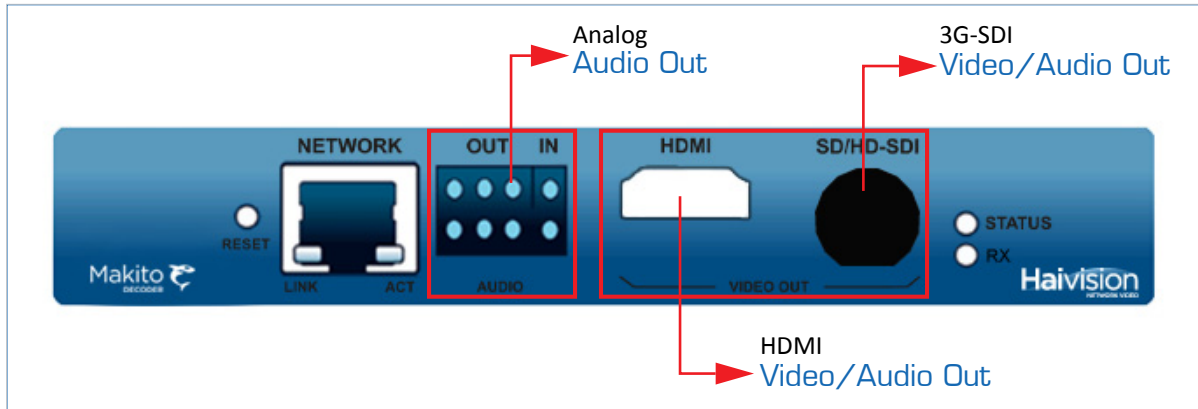
1. Connect the Makito's Ethernet port to the IP network using an Ethernet UTP cable (Type Cat 5 or higher).



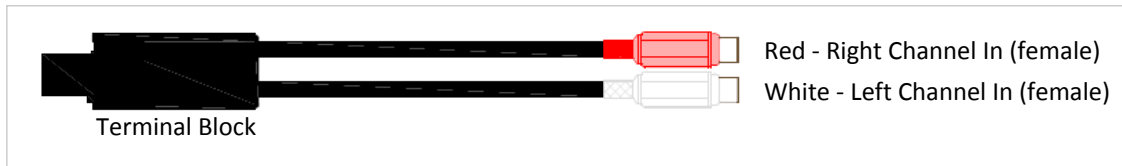
NOTE: To connect the serial interface (on the Makito Decoder Dual Height Blade), please refer to the User's Guide or the online help.

2. Video Out: Connect one or both of the Decoder's Video Outputs to a plasma or other video display(s), using the appropriate connector(s):

- **3G-SDI Video with Embedded Audio:** Use the BNC connector.
- **HDMI Video with Embedded Audio:** Use the HDMI connector.



3. **Analog Audio Out:** Connect the Decoder's Audio Output (the 8-pin terminal block connector) to the audio sound system/speakers, using the RCA female to Terminal audio dongle (shown below).



To Modify the Makito Decoder's IP Address

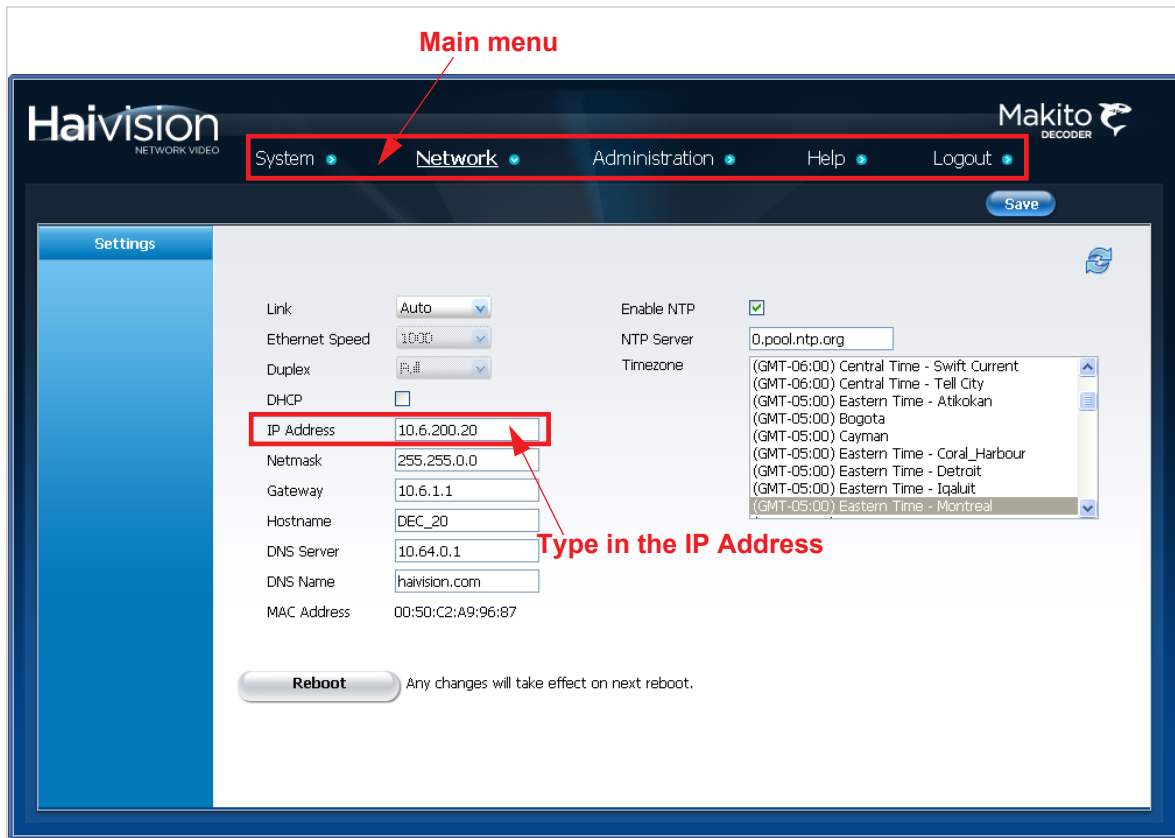
1. Power on the Decoder.
2. The Makito comes pre-configured with the following settings:

IP Address	Subnet Mask	Gateway
10.5.1.2	255.255.0.0	10.5.0.1

3. To access the configuration Web interface, open a Web browser and enter the default IP Address in the browser's address field.
4. Log in to the Makito Web Interface, using the following username and password:

Username	Password
admin	manager

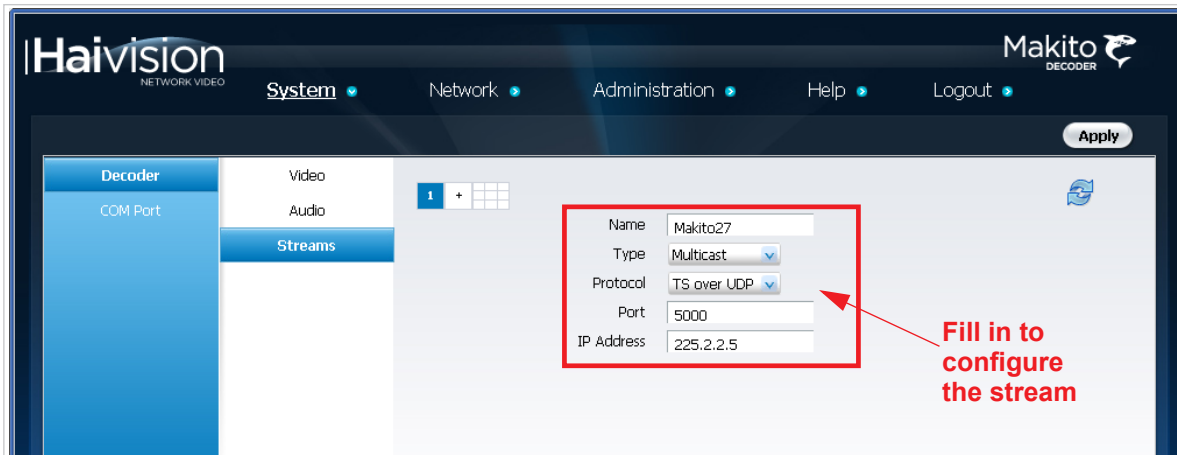
5. Click **NETWORK** from the main menu to open the **NETWORK SETTINGS** page (shown below).



6. Type in the new IP address. If required, select or enter other new value(s) in the appropriate field(s).
7. To save your changes, click **Save**.
8. To apply your changes, click **Reboot**. (You must reboot the system for the changes to take effect.)

To Set Up Decoding on the Makito

1. Click **SYSTEM** from the main menu and then **DECODER>STREAMS** from the sidebar menu to open the **STREAM SETTINGS** page (shown below).



2. Select the Stream Type (either Unicast or Multicast).
3. Select the Stream Protocol, for example, TS over UDP.
4. For a Multicast stream, type in the Multicast Address, for example, 225.2.2.5.
5. Type in the Stream Port, for example, #5000.
6. Click **Apply**.
7. Create a stream from either a Makito Encoder or a Hai1000 Mako Encoder with this Decoder as the destination. [Make sure the Encoder is on the same network segment.]
8. Start the stream from the Encoder end and you should see video on your Decoder displays.

For More Information

Contact Haivision Technical Support via our Support Portal on our website at: <http://www.haivision.com/support/>

Or you may use the phone number or email address listed below:

North America:	Toll Free: 1.877.224.5445
International:	Tel: 1-514-334-5445
	Fax: 1-514-334-0088
Technical Support email:	tickets@haivision.com
Product Information email:	info@haivision.com

You may download the firmware, Readme file, and PDF versions of the User's Guide and Quick Start Guide through our Download Center at: <http://www.haivision.com/download-center/>