

CDVR SDI Mini (2nd Generation) Quick Start Guide

Connect DVR 4.6 Display Engine SDI Mini



The Haivision Connect DVR multi-site solution enables you to stream time-shifted video from an originating site to remote venues. An integral part of the multi-site solution, the DVR SDI Mini appliance can accommodate synchronized dual-stream playout, preserving the large-scale theatrical experience (IMAG) from the main site to the remote venue with perfect synchronization. This latest generation allows you to stay connected at greater distances while still delivering top WiFi speeds for faster streaming.

This *Quick Start Guide* describes the steps required to install and setup the DVR SDI Mini appliance. See the [User's Guide](#) for further details on configuring the Connect DVR multi-site solution and using the appliance's web-based interface.

Guide Contents

- [Setting Up the Mini Device](#)
- [Powering On the Mini Device](#)
- [Changing Network Settings on the Mini](#)
- [Accessing the Web Interface on the Mini](#)
- [Connecting to the Console UI Remotely](#)

Use the following guidelines when unsafe conditions exist or when potentially hazardous voltages are present:

- Always use caution and common sense.
- To reduce the risk of electrical shock, do not operate equipment with the cover removed.
- Repairs must be performed by qualified service personnel only.

Improper handling and/or installation practices of sensitive equipment may VOID the warranty.

⚠ Caution

When handling components, or when setting switch options, always use an antistatic wrist strap connected to a grounded equipment frame or chassis. *If a wrist strap is not available, periodically touch an unpainted metal surface on the equipment.* Never use a conductive tool, such as a screwdriver or a paper clip, to set switches.

Waste Electrical and Electronic Equipment (WEEE) Disposal



In accordance with the European Union (EU) WEEE Directive, Haivision products that fall within the scope of the WEEE, are labeled with the above symbol, and customers are encouraged to responsibly recycle their equipment at the time of disposal. Haivision also offers its customers the option of returning Haivision equipment to facilitate its environmentally sound disposal.

For more information, please visit our website at: <https://www.haivision.com/environment>.

Setting Up the Mini Device

To set up the device:

1. **⚠ Important**

If there is any shipping damage, contact your support representative for return instructions (see [Getting Help](#)).

2. **⚠ Caution**

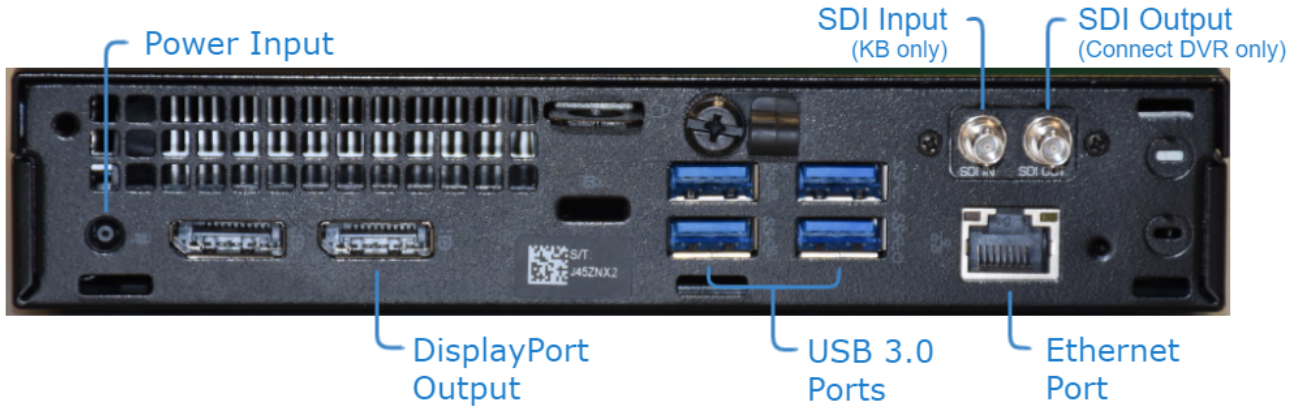
Insufficient air flow around the unit can cause it to overheat and perform erratically. To ensure proper air flow, allow plenty of room around the device's ventilation holes.

✔ Tip

Haivision offers adapter brackets to install your Mini in a server rack. See your Haivision representative or visit the [Haivision Store](#) for details.



3. On the back of the device, locate the Ethernet port and connect it to your network using an Ethernet cable (not included).



Connect DVR Second Generation Rear View

4. Screw the enclosed SDI adapter to the SDI Output port until secure and connect to your SDI source.

Note

The SDI Input port is not used.

5. Plug the power adapter into the appliance power connection (12V).
6. If you will be accessing the Console UI directly from the device:
 - Connect a monitor to the DisplayPort output.
 - Connect a USB keyboard to an available USB port (either on the front or back of the device).

Note

Alternatively, if you plan on accessing the device's Console UI remotely, see [Connecting to the Console UI Remotely](#) for instructions.

Related Topics

- [Powering On the Mini Device](#)
- [Connecting to the Console UI Remotely](#)

Powering On the Mini Device

To power the device:

1. **Important**

When powering ON and OFF the device, simply tap the power button. Do not hold down the button for an extended period as it will reset the device.



When the device finishes booting, it displays the Login screen for either the Console UI or the optional CentOS desktop depending upon your configuration.

! Important

Following the first boot, the device attempts to obtain an IP address from a DHCP server on your network. We recommend that you change to a static IP address before continuing with the setup. See [Changing Network Settings on the Mini](#).

Related Topics

- [Changing Network Settings on the Mini](#)

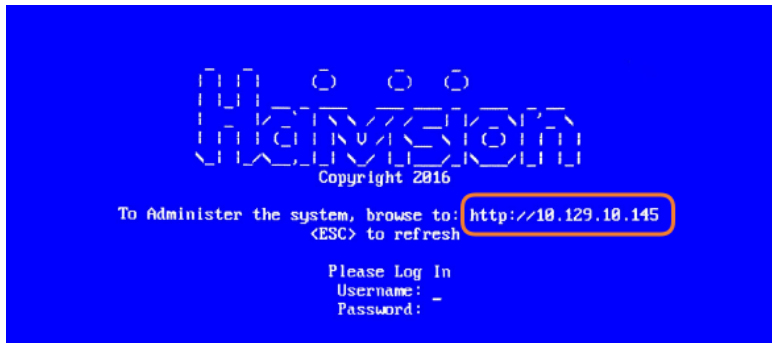
Changing Network Settings on the Mini

! Note

After first boot, the device attempts to obtain an IP address from a DHCP server on your network. We recommend that you change to a static IP address before continuing with the setup. Contact your network administrator for guidance on which network settings to use. The following section takes you through the steps to update your network settings using the Console UI.

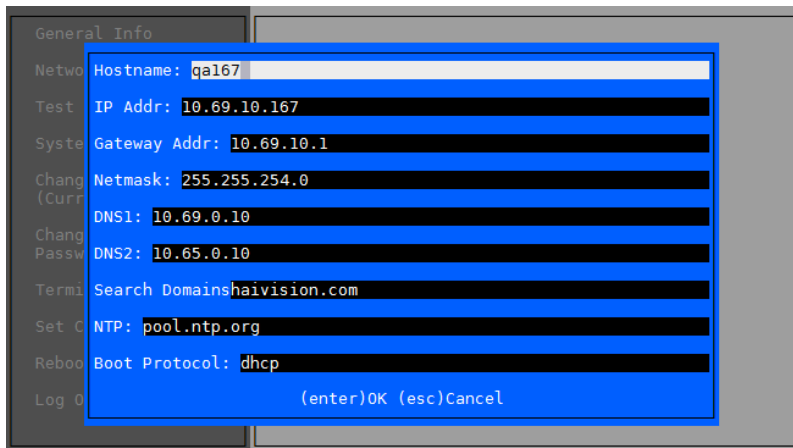
To change the network settings on the device:

1. After the system boots, if the Console UI welcome screen is not shown on the attached monitor, press **Ctrl + Alt + F1** on your keyboard.



The IP Address assigned to the device is displayed on the Console UI welcome screen.

2. Log in to the Console UI using the credentials provided in the *Important Notice* document that shipped with the device.
3. In the navigation sidebar, use the ↑↓ (up and down arrow) keys to highlight **Network Settings**, and then press the **Enter** key.
4. Change the Hostname, IP Address, Gateway Address, Boot Protocol (DHCP or static), and any other settings as appropriate for your particular network.



5. Press the **Enter** key to save your changes and return to the main screen.

Note

After pressing **Enter**, it takes a few seconds for the settings to be saved. The system may seem unresponsive during this time.

6. In the navigation sidebar, select **Log Out** and then press the **Enter** key to exit the Console UI.
7. To continue, refer to [Accessing the Web Interface on the Mini](#) for further configuration.

Related Topics

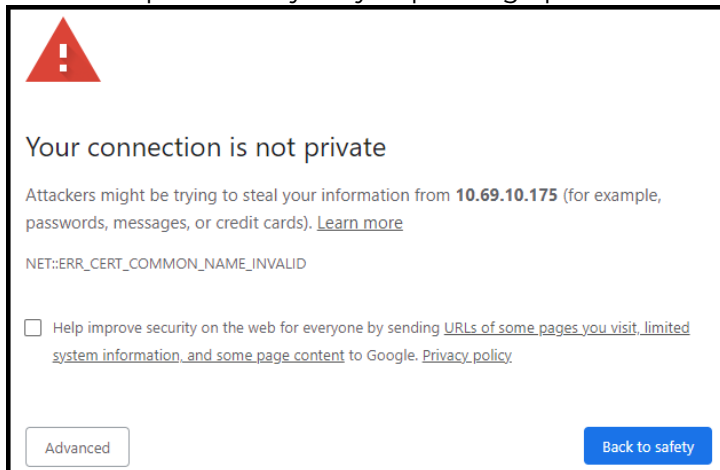
- [Using the Console UI in the User's Guide](#)
- [Accessing the Web Interface on the Mini](#)

Accessing the Web Interface on the Mini

To access the device's Web interface:

1. On another computer connected to the same network, open a Web browser.
2. Enter the device's assigned IP address. For example, if the IP Address is 10.5.1.4, enter a URL of https://10.5.1.4.
3. When a browser accesses the website, it requests a security certificate to confirm that the site is trusted.

The device ships with a self-signed SSL certificate key set which works with any configured server hostname. However, Web browsers do not consider self-signed certificates to be trusted, because they are not signed by a Certificate Authority. Consequently, when accessing the website with a self-signed certificate, users see a security warning and are prompted for authorization as shown below. Responses may vary depending upon the browser used.

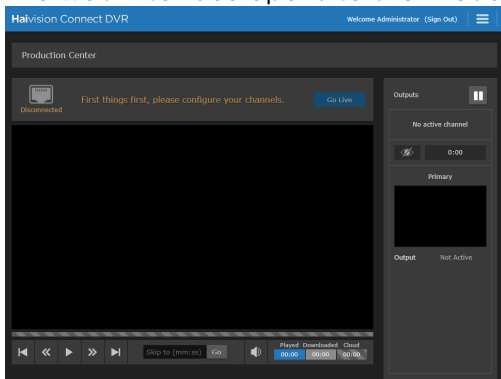


Important

Before proceeding or adding an exception for the site, check with your administrator on the correct response.

4. Sign in using one of the credentials provided on the *Important Notice* included with your device.

The web interface opens to the Production Center screen.



For step-by-step information on using the web interface, refer to the [Connect DVR User's Guide](#).

Related Topics

- [Changing Network Settings on the Mini](#)
- [User's Guide](#)

Connecting to the Console UI Remotely

! Important

Accessing the Console UI requires administrator privileges and password.

Connecting to the Console UI remotely requires a Secure Shell (SSH) client and the IP address of the device. If you'd prefer to connect to the Console UI directly, you will need a monitor, a USB keyboard, and possibly a mouse to connect to the device. See [Connecting to the Console UI Remotely](#).

To access the Console UI using a secure shell:

1. Initiate a secure shell (SSH) connection to the IP address of the device using an SSH client (for example, PuTTY).
2. When prompted, sign in using the `hvrroot` username and password. Refer to the *Important Notice* document that accompanied your device for the default `hvrroot` password.

See [Using the Console UI](#) for details on the various tasks you can perform with the Console UI.

Related Topics

- [Connecting to the Console UI Remotely](#)
- [Using the Console UI](#) in your User's Guide.

Obtaining Documentation

This document was generated from the Haivision InfoCenter. To ensure you are reading the most up-to-date version of this content, access the documentation online at <https://doc.haivision.com>. You may generate a PDF at any time of the current content. See the footer of the page for the date it was generated.

Getting Help

General Support	<p>North America (Toll-Free) 1 (877) 224-5445</p> <p>International 1 (514) 334-5445</p> <p><i>and choose from the following:</i> Sales - 1, Cloud Services - 3, Support - 4</p>
Managed Services	U.S. and International 1 (512) 220-3463
Fax	1 (514) 334-0088
Support Portal	https://support.haivision.com
Product Information	info@haivision.com