

# Connect DVR DE Quick Start Guide

## Connect DVR 4.7 Display Engine

The Haivision Connect DVR multi-site solution enables you to stream time-shifted video from an originating site to remote venues. An integral part of the multi-site solution, the Display Engine DVR appliance can accommodate synchronized dual-stream playout, preserving the large-scale theatrical experience (IMAG) from the main site to the remote venue with perfect synchronization.



This *Quick Start Guide* describes the steps required to install and setup the Display Engine DVR appliance. See the [User's Guide](#) for further details on configuring the Connect DVR multi-site solution and using the appliance's web-based interface.

### Guide Contents

- [Connecting the Connect DVR Device](#)
- [Changing Network Settings](#)
- [Accessing the Connect DVR Web Interface](#)
- [Waste Electrical and Electronic Equipment \(WEEE\) Disposal](#)

## Safety Guidelines

Use the following guidelines when unsafe conditions exist or when potentially hazardous voltages are present:

- Always use caution and common sense.
- To reduce the risk of electrical shock, do not operate equipment with the cover removed.
- Repairs must be performed by qualified service personnel only.

Improper handling and/or installation practices of sensitive equipment may VOID the warranty.

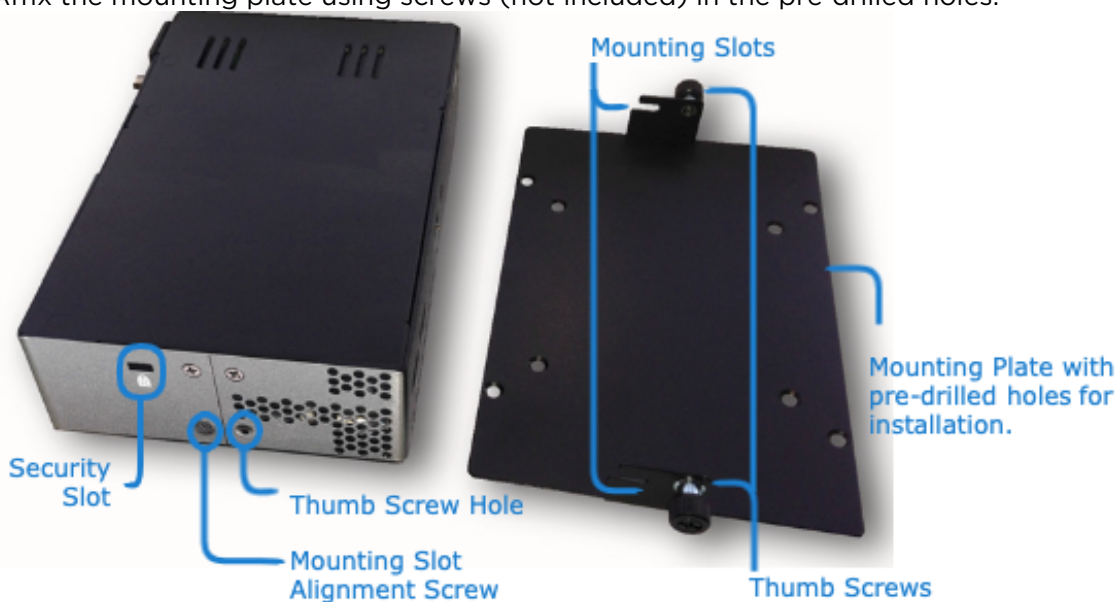
### ⚠ Caution

When handling components, or when setting switch options, always use an antistatic wrist strap connected to a grounded equipment frame or chassis. *If a wrist strap is not available, periodically touch an unpainted metal surface on the equipment.* Never use a conductive tool, such as a screwdriver or a paper clip, to set switches.

## Connecting the Connect DVR Device

To connect the device:

1. *(Optional)* For installation onto the rear of a monitor, the device includes a mounting plate for a VESA standard display mount. To use the mounting plate:
  - a. Determine where you are placing the Display Engine. Verify that the location allows for making the connections on the back of the device and does not block any air vents.
  - b. Affix the mounting plate using screws (not included) in the pre-drilled holes.

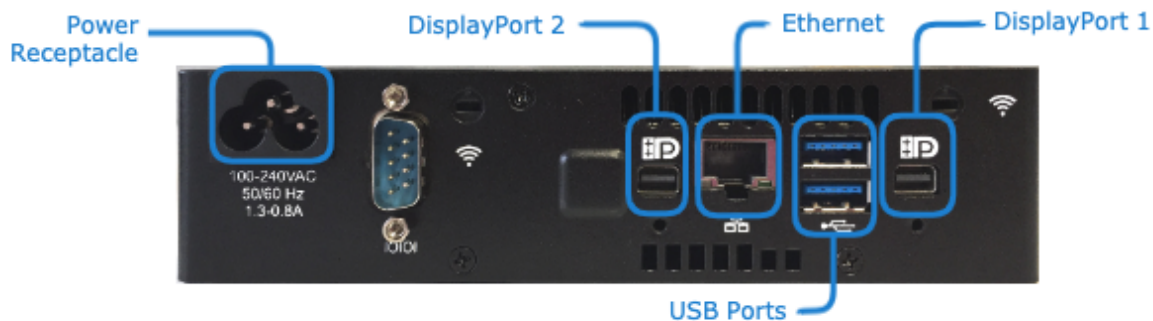



- c. When the mounting plate is secured, loosen the thumb screws on either side of the device and slide the device into the mounting plate so that the alignment screws are in the center of the mounting slots.
  - d. Slide the device until the thumb screws align with their respective holes. Push down as you turn the thumb screws to secure.
2. On the back of the Display Engine:
  - a. Connect to your network using an Ethernet cable.

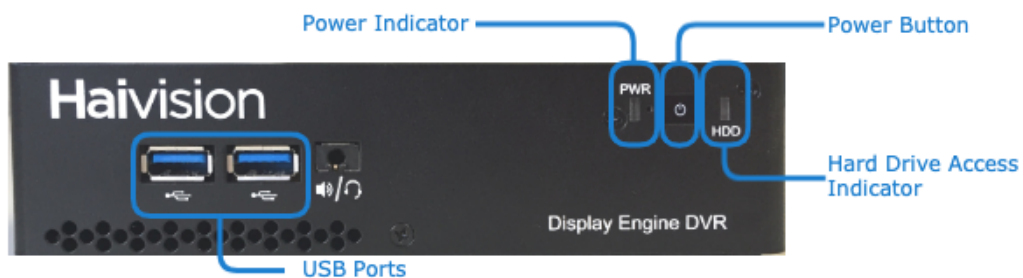
**Note**

Two video adapters are included to allow you to use the most common HDMI (Male-to-Male) cables for connecting your displays to the Display Engine.

- c. Attach a keyboard and mouse to the available USB ports.
  - d. Attach the included power cord to the power receptacle and plug the other end into a power outlet.



3. On the front of the device, press the  button to power it on. The PWR LED turns on and the HDD LED flashes when the hard drive is accessed.



## Related Topics

- [Changing Network Settings](#)

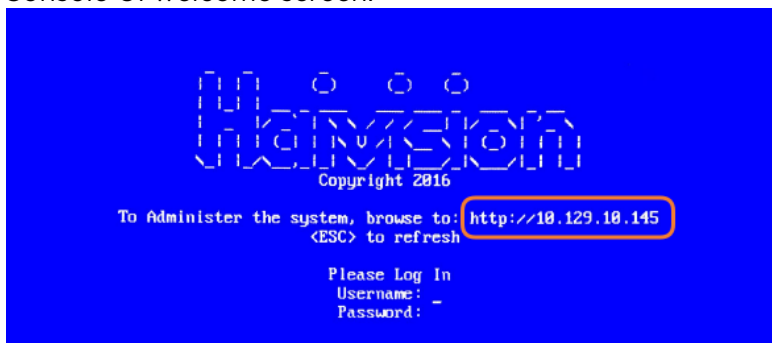
## Changing Network Settings

**Note**

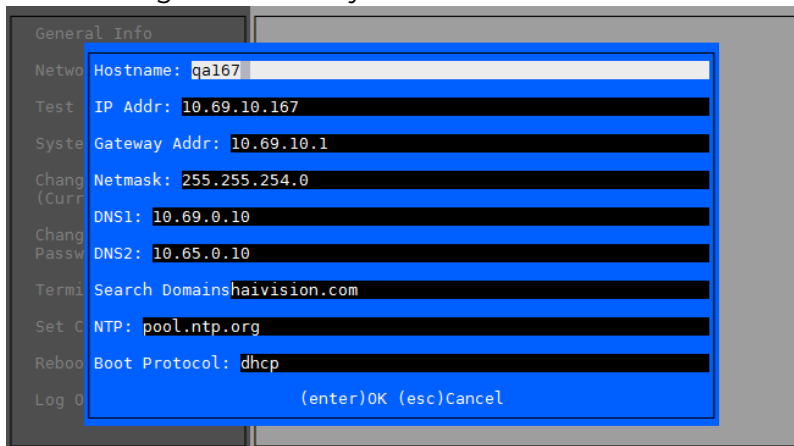
After first boot, the device attempts to obtain an IP address from a DHCP server on your network. We recommend that you change to a static IP address before continuing with the setup. Contact your network administrator for guidance on which network settings to use. The following section takes you through the steps to update your network settings using the Console UI.

To change the network settings on the device:

1. After the system boots, if the Console UI welcome screen is not shown on the attached monitor, press **Ctrl + Alt + F1** on your keyboard. The IP Address assigned to the device appears on the Console UI welcome screen.



2. Log in to the Console UI using the credentials in the *Important Notice* postcard shipped with your appliance.
3. In the navigation sidebar, use the ↑↓ (up and down arrow) keys to highlight **Network Settings**, and then press the **Enter** key.
4. Change the Hostname, IP Address, Gateway Address, Boot Protocol (DHCP or static), and any other settings as necessary.

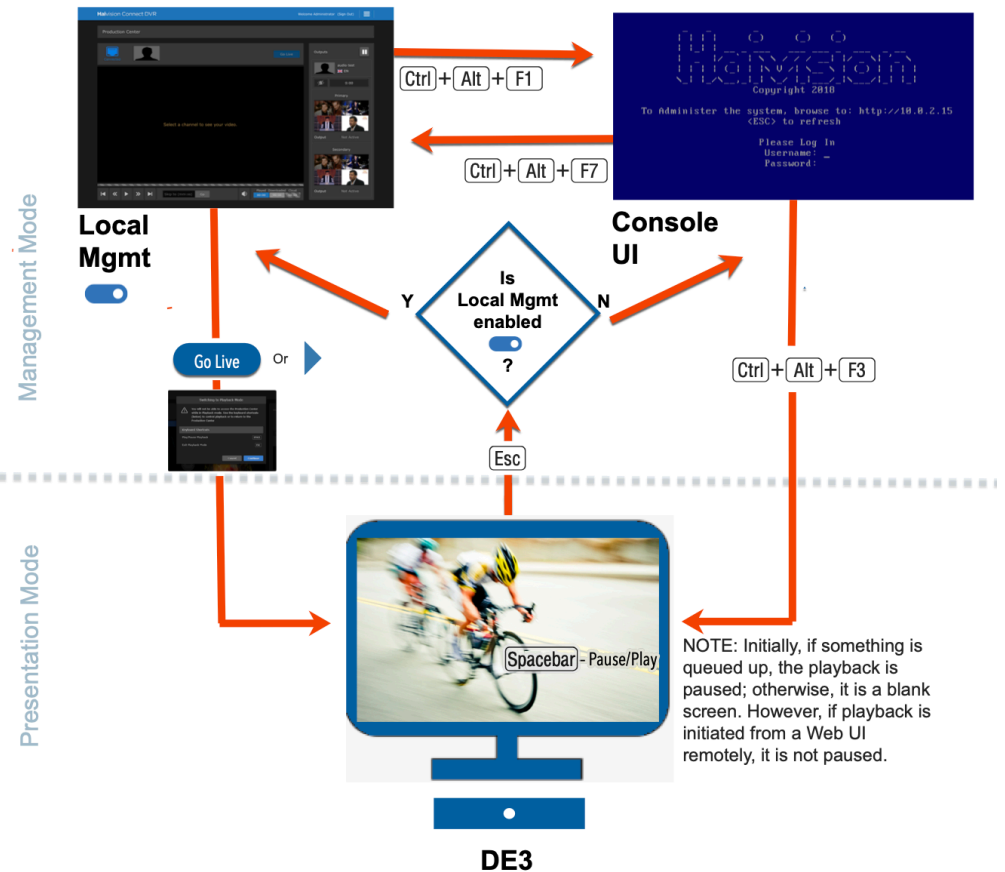


5. Press the **Enter** key to save your changes and return to the main screen.

**Note**

After pressing **Enter**, it takes a few seconds for the settings to be saved. The system may seem unresponsive during this time.

6. Select **Log Out** and then press the **Enter** key to exit the Console UI.
7. After configuring the Console UI, press **Ctrl + Alt + F3** on the attached keyboard to switch to Presentation mode and display the Connect DVR playback on the attached monitor.
8. To continue, refer to: [Accessing the Connect DVR Web Interface](#) for further configuration.



## Related Topics

- [Using the Console UI](#) in the User's Guide
- [Accessing the Connect DVR Web Interface](#)

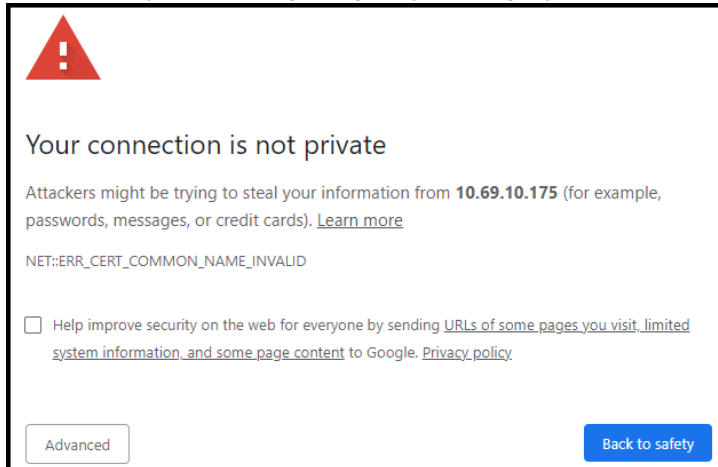
## Accessing the Connect DVR Web Interface

To access the device's Web interface:

1. On another computer connected to the same network, open a Web browser.
2. Enter the device's assigned IP address. For example, if the IP Address is 10.5.1.4, enter a URL of `https://10.5.1.4`.
3. When a browser accesses the website, it requests a security certificate to confirm that the site is trusted.

The device ships with a self-signed SSL certificate key set which works with any configured server hostname. However, Web browsers do not consider self-signed certificates to be trusted, because they are not signed by a Certificate Authority. Consequently, when accessing the website with a self-signed certificate, users see a security warning and are prompted for authorization as shown

below. Responses may vary depending upon the browser used.

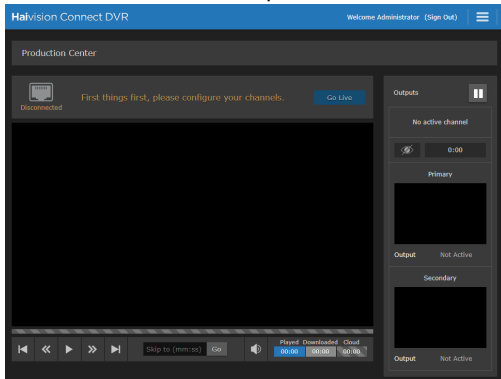


**Important**

Before proceeding or adding an exception for the site, check with your administrator on the correct response.

4. Sign in using one of the credentials provided on the *Important Notice* included with your device.

The web interface opens to the Production Center screen.



For step-by-step information on using the web interface, refer to the [Connect DVR User's Guide](#).

**Related Topics**

- [Changing Network Settings](#)
- [User's Guide](#)

## Waste Electrical and Electronic Equipment (WEEE) Disposal



In accordance with the European Union (EU) WEEE Directive, Haivision products that fall within the scope of the WEEE, are labeled with the above symbol, and customers are encouraged to responsibly recycle their equipment at the time of disposal. Haivision also offers its customers the option of returning Haivision equipment to facilitate its environmentally sound disposal.

For more information, please visit our website at: <https://www.haivision.com/environment>.

## Obtaining Documentation

This document was generated from the Haivision InfoCenter. To ensure you are reading the most up-to-date version of this content, access the documentation online at <https://doc.haivision.com>. You may generate a PDF at any time of the current content. See the footer of the page for the date it was generated.

## Getting Help

<b>General Support</b>	<p>North America (Toll-Free)  <b>1 (877) 224-5445</b></p> <p>International  <b>1 (514) 334-5445</b></p> <p><i>and choose from the following:</i>  Sales - 1, Cloud Services - 3, Support - 4</p>
<b>Managed Services</b>	U.S. and International 1 (512) 220-3463
<b>Fax</b>	1 (514) 334-0088
<b>Support Portal</b>	<a href="https://support.haivision.com">https://support.haivision.com</a>
<b>Product Information</b>	<a href="mailto:info@haivision.com">info@haivision.com</a>